

**Evolution CCM Positioning
in Lao PDR:
Key findings of review existing
structures**

11th August 2021

Outline

- I. Background
- II. Methodology
- III. Key findings
- IV. Successful positioning and the principle
- V. Discussion on options and organograms
- VI. Conclusion

I. Background

Background

- **Base on Global Fund Guideline and CCM Policy**

- Position CCM with in existing health platform
- Engage DPs/CSO in CCM positioning
- Ensuring Investment in 3 ATM programs

- Positioning pathway

Knowledge-----Coordination----- Sustainable structure

(Map health coordination) (Analyze shared dialogue) (Position CCM in a national body)

- **Base on future direction of the national health sector**

- Simplification structure
- Align with in the existing health structure
- Implementation Vientiane Declaration on AIDs effectiveness
- Not create a parallel structure with the existing platform

II. Methodology

Methodology

- Desk Review the GFATM Guidelines, CCM Lao documents, Lao documents on AIDs Effectiveness
- Review 17 existing health committees
- Define indicators
- Scoring
- Analyze

List of existing health committees review

No	Name of committees	Dated issued	Number
1	CCM	2002	
2	Health SWC, health sector reform & Samsang Committee	Aug 17	N1828/MoH
3	HANSA committee	May 20	N0969/MoH
4	Technical committee for PCRCM Covid-19	Apr 20	N0797/MoH
5	Disaster Prevent & control Committee	Aug 13	N1868/MoH
6	Covid-19 Vaccine Committee	Oct 20	N2521/MoH
7	Single door coordination investment committee (SDC)	Jul 20	N1260/MoH
8	Procurement & bidding committee	Jan 17	N0150/MoH
9	Advancement Women Committee	Nov 17	N2609/MoH
10	Responsible person and coordination committee for NCD	Feb 14	N474/MoH
11	Human Trafficking Committee Sec	Nov 17	N2603/MoH
12	National Committee on HIV/AIDS	Nov 17	N2603/PM
13	National Task force Covid-19	Jun 21	N59/PM
14	Sec National Task force Covid-19	Feb 20	N02/PM
15	National CAW committee (NCAW)	Jun 17	N47/PM
16	National Committee on Nutrition (NCN)	Jul 14	N93/PM
17	National STC for EU budget Support Nutrition (STC EU BS Nutrition)	Dec 18	vice PM

12 + 4 Indicators

	First Screening
1	Committee title
2	Positioning
3	Composition Alignment
4	Composition Harmonization
5	composition Inclusion
6	Chair
7	Secretariat
8	Current committee Function
9	Current Sec Function
10	Coordination to CCM
11	TOR CCM related
12	Integration to CCM

	Second Screening
1	Duplicate
2	DPs include
3	CSO include
4	Date issued

Definition – Scoring

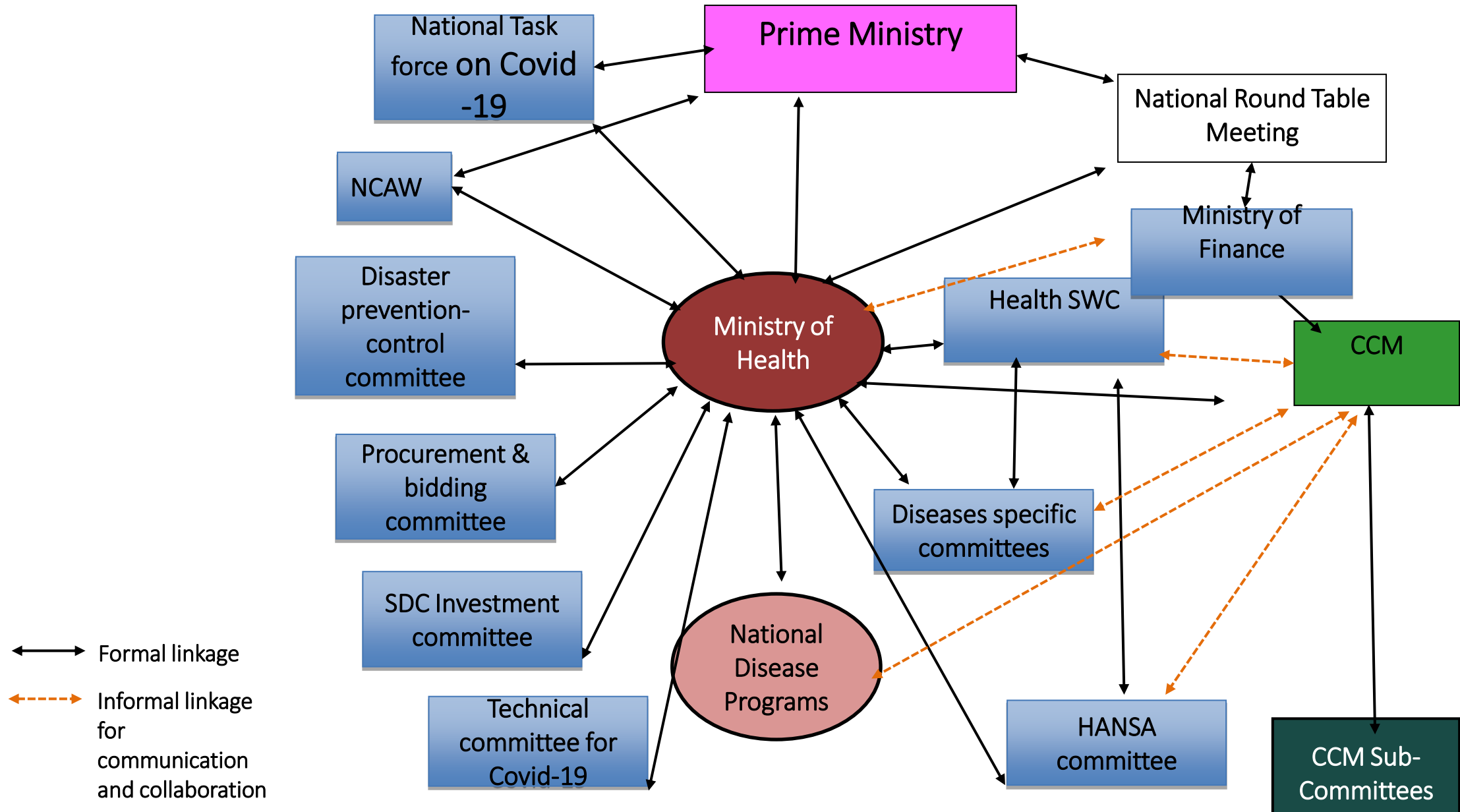
N	Name Indicator	Definition	Explanation	Scoring	Full-score	Score 1	Final score
1	Committee title	Visibility	8 programs (8-5-3)	3-2-1	3		
2	Positioning		In health-out health	3-2-1	3		
3	Composition Alignment	Alignment	8 programs (8-5-3)	3-2-1	3		
4	Composition Harmonization	Harmonization with current TOR	TOR (Full-partly-No)	3-2-1	3		
5	composition Inclusion	Inclusion ATM	CDC+TB+HIV+CEMPE	3-2-1-0	3		
6	Chair		M-DP-Depart-SubP	3-2-1	3		
7	Secretariat		Cab-DIC-A/T/M	3-2-1	3		
8	Current committee Function	Regular meeting, plan, M&E	Priority/function/less function	3-2-1	3		
9	Current Sec Function	Regular meeting, plan, M&E	Priority/function/less	3-2-1	3		
10	Coordination to CCM	Plan / visible in organogram	Strong-moderate-less	3-2-1	3		
11	TOR CCM related	13 CCM roles	Strong-moderate-less	3-2-1-0	3		
12	Integration to CCM	CCM Integration / to CCM	Strong-moderate-less	3-2-1	3		
13	Duplicate	with another health structure	Yes-No				
14	DPs include	Possibility include	Yes-No				
15	CSO include	Possibility include	Yes-No				
16	Date issue	out of / up to date		Max score	36		

III. Key findings

Findings

No	Name of committees	Total Score	Rate
1	CCM	30	
2	Health SWC sector reform & Samsang Com	35	1st
4	HANSA Com	29	2nd
3	Technical Com for PCRCM Covid-19	27	3rd
5	Disaster Prevent & control Com	26	4nd
6	Covid-19 Vaccine Com	18	12th
7	SDC investment Com	20	7th
8	Prpocurement bidding Com	18	12th
9	advancement Women Com	18	12th
10	NCD Com	16	16th
11	Human Traffing Com Sec	17	15th
12	HIV/AIDS Com	24	5th
13	National Task force Covid-19	22	6th
14	Sec National Task force Covid-19	20	7th
15	NCAW	19	11th
16	NCN	20	7th
17	STC EU BS Nutrition	20	7th

Annex 1: Country Coordinating Mechanism Positioning Mapping in Lao P.D.R in 2021



Annex 2: Mapping scoring of the current existing structure

No	Name of committees	S	Positioning	S	Align	S	Harm oni	S	Inclusion	S	Chair	S	Sec	S	Com funct	S	Sec Funct	S	Coor CCM	S	TOR CCM relate	S	Integrat CCM	S	Total S	Rate
									CDCATM																	
1	CCM	1	C health structure ++	3	3 programs	1	partly	2	Inclus	3	Vice -M	2	Cab	3	Prior	3	Prior	3	Prior	3	13 roles	3	Prior	3	30	
2	Health SWC health reform Samsang Com	3	C health structure	3	8 programs +UHS+NHIB	3	Full	3	Inclus	3	Ministers	3	Cab	3	Prior	3	Prior	3	Prior	3	4 role	2	Prior	3	35	1st
3	HANSA committee	2	C health structure	3	8 programs	3	partly	2	No M	3	DOIC	2	NPCO	1	Prior	3	Prior	3	Prior	3	3 role	2	M	2	29	2nd
4	Technical Com for PCRCM Covid-19	1	C health structure +	3	8 programs +Hospitals+MOD+MPS	3	Full	3	No ATM	1	ministers +	3	Cab +++	3	Prior	3	Prior	3	less	1	1 role	1	M	2	27	3rd
5	Disaster Prevent & Control Com	2	C health structure	3	8 programs + mass organizatio	3	full	3	No AT	2	ministers +	3	Cab	3	Funct	2	Funct	2	less	1	none	0	M	2	26	4nd
6	Covid-19 Vaccine Committee	1	C health structure	3	5 programs	2	partly	2	No ATM	1	Vice M	2	Cab	3	less	1	less	1	less	1	none	0	less	1	18	12th
7	SDC investment Com	1	health structure	3	5 programs	2	partly	2	None	0	ministers +	3	cab	3	Funct	2	Funct	2	less	1	none	0	less	1	20	7th
8	Prpocurement & bidding committee	1	C health structure ++	3	4 programs	2	partly	2	None	0	ministers +	3	DoF	2	Funct	2	Funct	2	less	1	none	0	less	1	18	12th
9	Advancement Women Com	1	C health structure ++	3	1 programs	1	partly	2	none	0	Vice M	2	cab	3	Funct	2	Funct	2	less	1	none	0	less	1	18	12th
10	NCD com	1	C h structure	3	2 HCD+hospital	1	partly	2	none	0	Minister	3	DHC	2	less	1	less	1	less	1	none	0	less	1	16	16th
11	Human Trafficking Com Sec	1	C health structure	3	3 programs	1	partly	2	no CDCTM	1	Vice M	2	DHC	2	Funct	2	less	1	less	1	none	0	less	1	17	15th
12	HIV/AIDS Com	1	C h structure++	3	1 program	1	partly	2	NoTM	2	Ministers	3	AC	1	less	1	less	1	Prior	3	Prior	3	Prior	3	24	5th
13	National Task force Covid-19	1	C health structure++	3	6 programs	3	partly	2	NoATM	1	PM	3	Vice M	3	Funct	2	Funct	2	less	1	none	0	less	1	22	6th
14	Sec National Task force Covid-19	1	C health structure++	3	6 programs	3	partly	2	No ATM	1	Vice M	2	CDC	2	Funct	2	Funct	2	less	1	none	0	less	1	20	7th
15	NCAW	1	C health structure++	3	1 program	1	partly	2	none	0	PM	3	LWU	3	Funct	2	Funct	2	less	1	none	0	less	1	19	11th
16	NCN	1	C h structure++	3	1 program	1	partly	2	none ATM	1	PM	3	Vice M	3	Funct	2	Funct	2	less	1	none	0	less	1	20	7th
17	STC EU BS Nutrition	1	c hstructure++	3	6 programs	3	partly	2	None	0	PM	3	DHHP	2	Funct	2	Funct	2	less	1	none	0	less	1	20	7th

Top 4 high score of the existing health structures

No	Name of committees	Total S	Rate
1	CCM	30	NA
2	Health SWC, Sector Reform & Samsang Com	35	1st
3	HANSA Committee	29	2nd
4	Technical Com for PCRCM Covid-19	27	3rd
5	Disaster Prevent & Control Com	26	4nd

Top 4 high score of the existing health structures: Date issue

No	Name of committees	Period time	Numero	Rate
2	Health SWC, Sector Reform & Samsang Com	Aug 17	N1828	1st
3	HANSA Committee	May 20	N0969	2nd
4	Technical Com for PCRCM Covid-19	Apr 20	N0797	3rd
5	Disaster Prevent & Control Com	Aug 13	N1868	4nd

Possibility Including of DPs and CSOs

No	Name of committees	Rate	Duplicate	DP in	CSO in
2	Health SWC health, Sector Reform & Samsang Com	1st	No	Yes (Cochair Japan Ambassador WHO)	Possible (SWC (O) CSO observer)
3	HANSA Committee	2nd	Possible	No	Less possible
4	Technical Com for PCRCM Covid-19	3rd	Possible	No	Less possible
5	Disaster Prevent & Control Com	4nd	Possible	No	Less possible

Top 4: existing structure with high score - Analysis

No	Name of committees	S	Positioning	S	Align	S	Harm oni	Sinclusion		S	chair	S	Sec	S	Com funct	S	Sec Funct	S	Coor CCM	S	TOR CCM relate	S	Integrat CCM	S	Evolutio n
									CDCATM																
1	CCM	1	C health structure +	3	3 programs	1	part	2	Inclusion	3	Vice - M	2	Cab	3	Prior	3	Prior	3	Prior	3	13 roles	3	Prior	3	
2	Health SWC Reform Samsang Com	3	C health structure	3	8 programs +UHS+NHIB	3	Full	3	Inclusion	3	Minist ers	3	Cab	3	Prior	3	Prior	3	Prior	3	4 role	2	Prior	3	0+1
4	HANSA Committee	2	C health structure	3	8 programs	3	part	2	No M	3	DOIC	2	NPCO	1	Prior	3	Prior	3	Prior	3	3 role	2	M	2	2+5
3	Technical Com for PCRCM Covid-19	1	C health structure +	3	8 programs +Hospitals+ MOD+MPS	3	Full	3	No ATM	1	minist ers+	3	Cab +++	3	Prior	3	Prior	3	less	1	1 role	1	M	2	4+1
5	Disaster Prevent & Control Com	2	C health structure	3	8 programs + mass organizatio	3	full	3	No AT	2	minist ers+	3	Cab	3	Funct	2	Funct	2	less	1	none	0	M	2	2 +4

Summary Key Findings

- Though Most of center of coordination of the existing structure located in Cabinet like CCM Sec
- Too many coordinating donor platforms
- Too many national bodies
- Too many health programs coordination mechanism
- Less function of some committees and its secretariat
- Out of date of few committees

IV. Principles CCM positioning option and successful

Successful CCM positioning

The end of positioning pathway

- Multisectoral partnership
- Improved coordination
- Effective health investment
- Improved grant oversight
- Regular monitoring
- Advocacy for realization of domestic investments

Principle CCM positioning options

Existing CCM aim to different positioning options. These include:

1. Align CCM with other donor 's program in a single coordinating platform
- 2. Transfer the CCM structure with in a national body**
- 3. Shift CCM function and principles within existing body(ies) and set up an aligned health program coordination**

V. Discussion on options and organograms

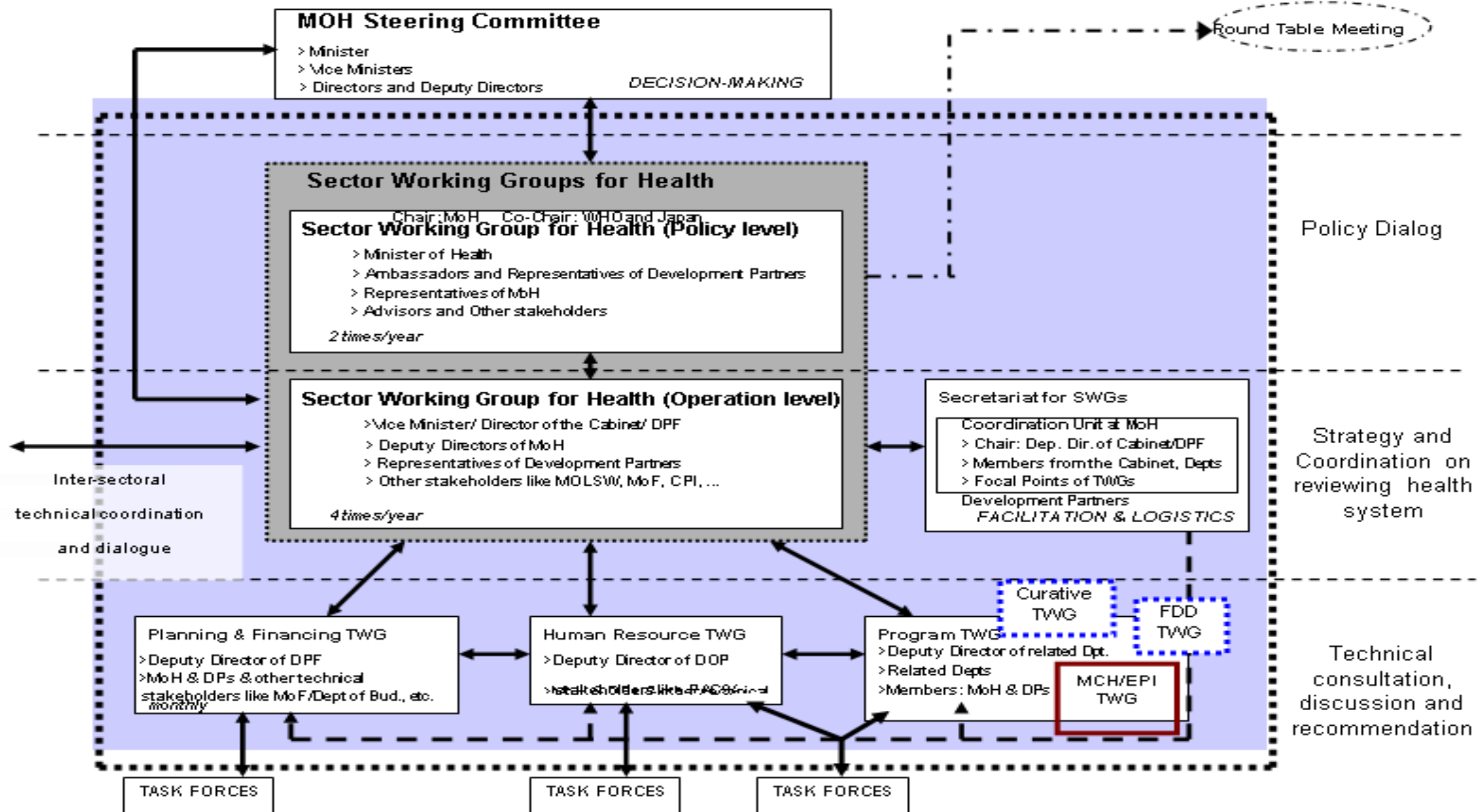
Propose 4 options of CCM positioning integrated in the existing structures

- 1. Option 1:** Positioning CCM in Health SWC, Health Reform Samsang Com
- 2. Option 2:** Positioning CCM in HANSA Committee
- 3. Option 3:** Positioning CCM in Technical Com for PCRCM Covid-19
- 4. Option 4:** Positioning CCM in Disaster Prevent & Control Com

Discussion: propose 4 options of CCM
positioning integrated in the existing structures

- 1. Option 1: Positioning CCM in Health SWC, Health Reform Samsang Com**
2. Option 2: Positioning CCM in HANSA Committee
3. Option 3: Positioning CCM in Technical Com for PCRCM Covid-19
4. Option 4: Positioning CCM in Disaster Prevent & Control Com

Structure of Sector-wide Coordination Mechanism for Health

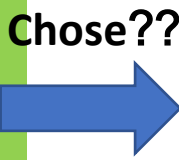


Option 1: Positioning CCM in Health SWC Sector Reform Samsang

No	Name of committees	S	Positioning	S	Align	S	Harm oni	S	inclusion	S	chair	S	Sec	S	Com funct	S	Sec Funct	S	Coor CCM	S	TOR CCM relate	S	Integ rat CCM	S	Evolu tion
2	Health SWC health reform Samsang	3	C health structure	3	8 programs +UHS+NHIB	3	Full	3	Inclusion	3	Minist ers	3	Cab	3	Prior	3	Prior	3	Prior	3	4 role	2	Prior	3	0+1

1. Revise TOR CCM - adding CCM roles in SWC TOR; adding CCM committee in the organogram and coordinating mechanism
2. CCM same as SWC Policy level members mainly from health sector (from line ministries, DPs and CSO are observer, Except CO-Chairs from donor & WHO)

3. CCM Executive and CCM member
4. CCM chair – same as
5. Oversight committee, RMC - merging
6. CCM Secretariat - merging



Chose??

Option 1.1:

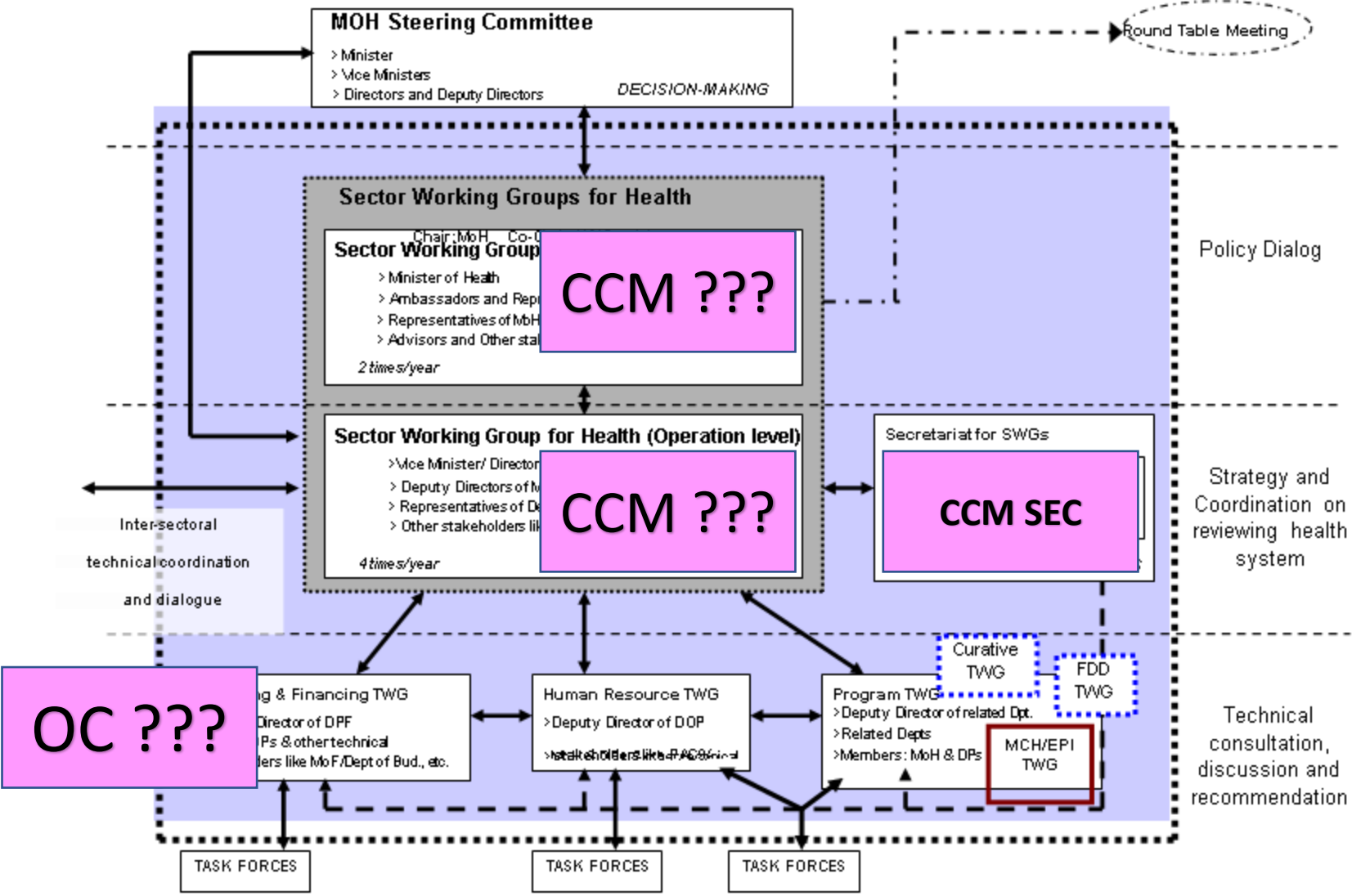
- merging in SWC Policy level
- SWC P Chair (no election and nor rotation)
- SWC operational and TWG level
- its current secretariat roles

Or Option 1.2:

- in SWC Operational level
- SWC O Chair – Vice Minister
- SWC at TWG level
- its current secretariat roles

Organogram 1: Positioning CCM in Health SWC Sector Reform Samsang

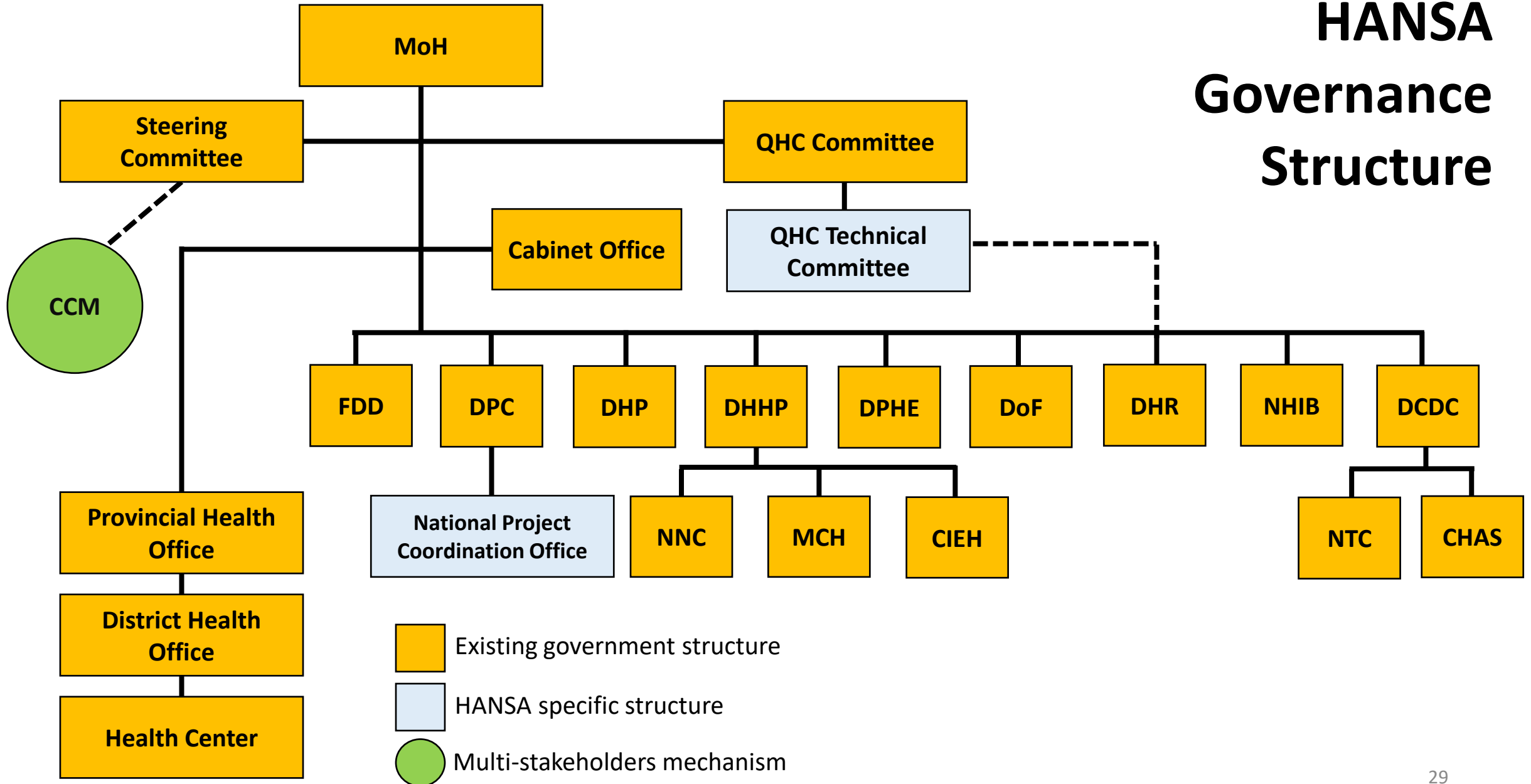
Structure of Sector-wide Coordination Mechanism for Health



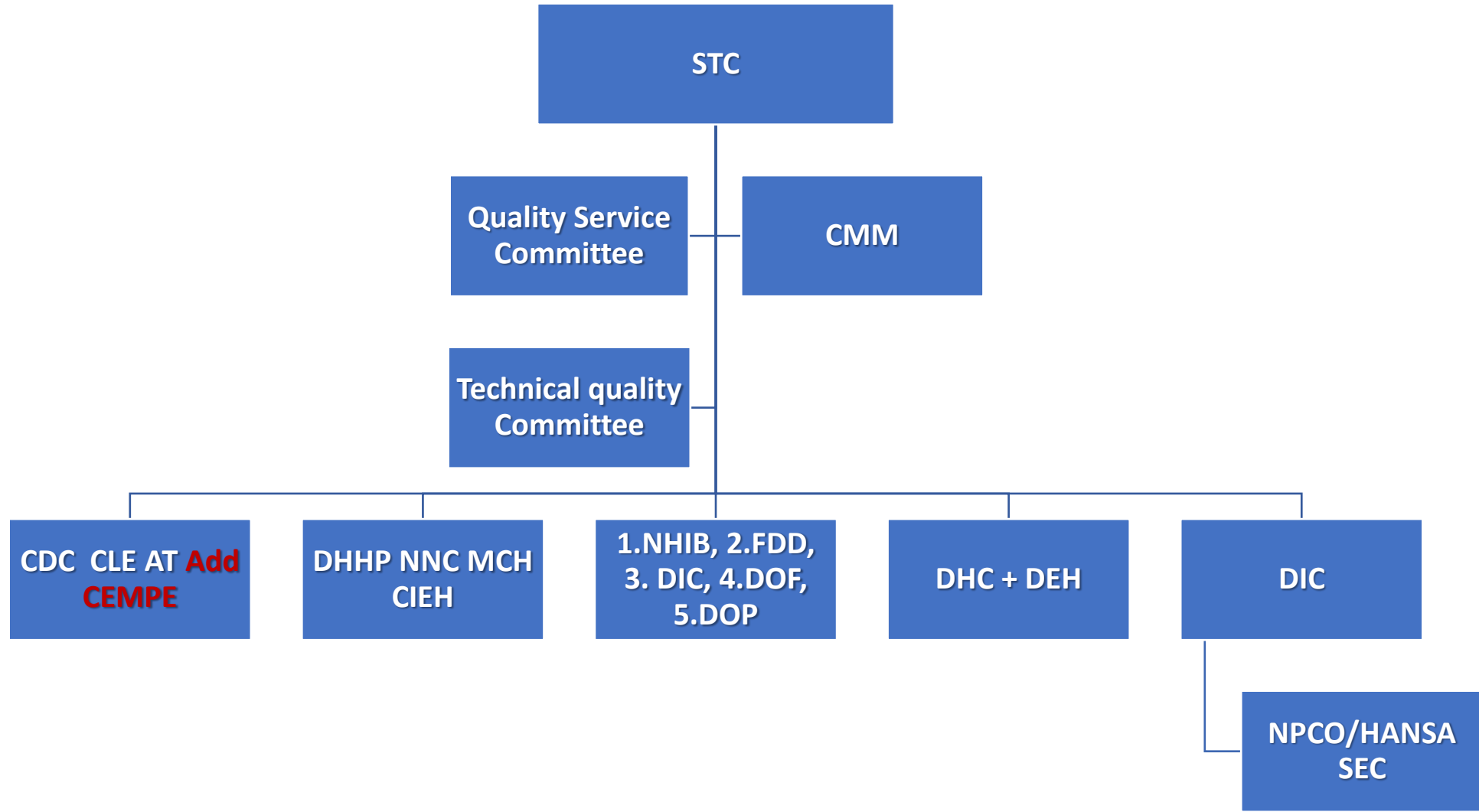
Discussion: propose 4 options of CCM positioning integrated in the existing structures

1. Option 1: Positioning CCM in Health SWC, Sector Reform Samsang Com
- 2. Option 2: Positioning CCM in HANSA Committee**
3. Option 3: Positioning CCM in Technical Com for PCRCM Covid-19
4. Option 4: Positioning CCM in Disaster Prevent & Control Com

HANSA Governance Structure



Organogram of HANSA committee

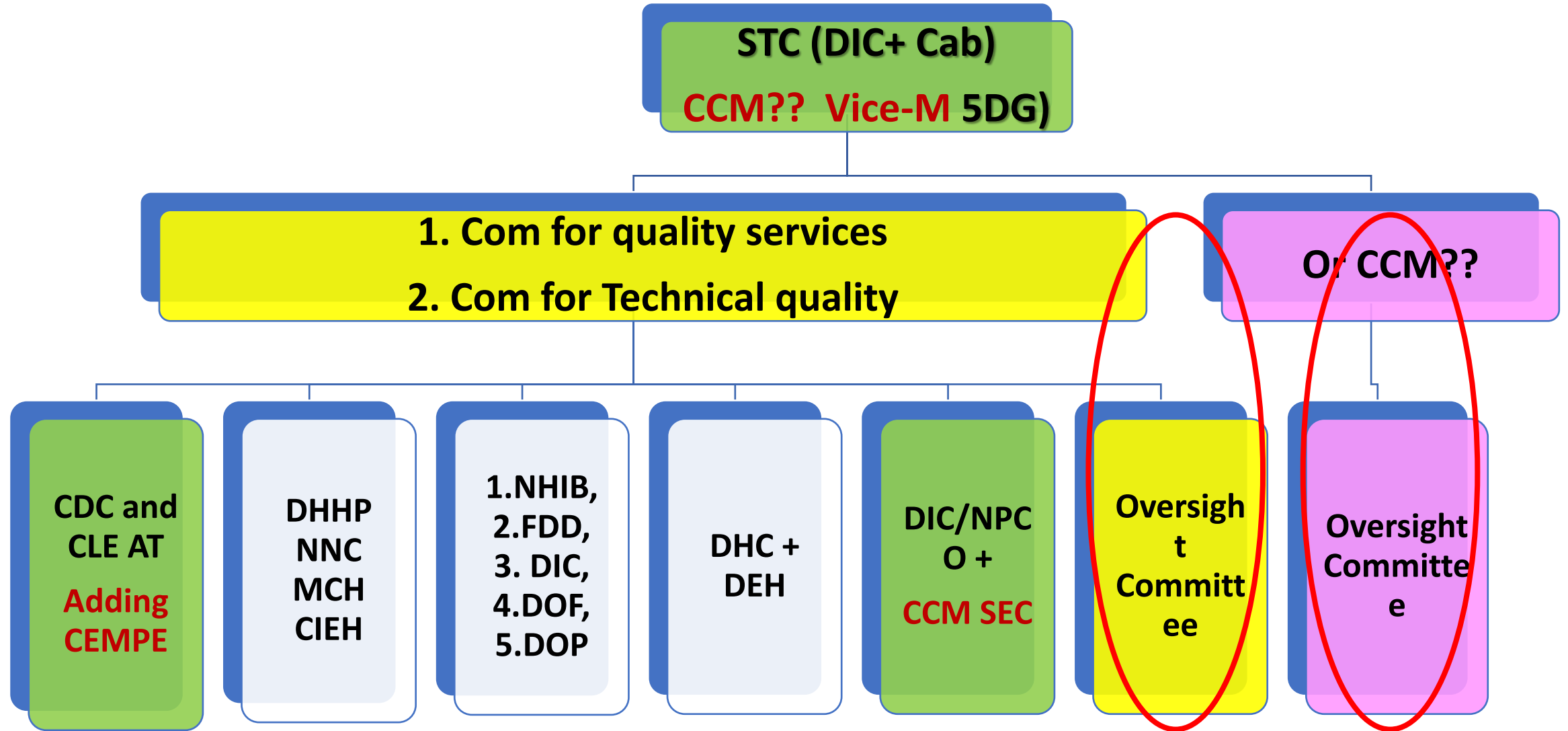


Option 2: Positioning CCM in HANSA committee

No	Name of committees	S Positioning	S Align	S Harm oni	S inclusion CDCATM	S chair	S Sec	S Com funct	S Sec Funct	S Coord CCM	S TOR CCM relate	S Integ rat CCM	S Evolu tion												
4	HANSA committee	2	C health structure	3	8 programs	3	part	2	No M	3	DOIC	2	NPCO	1	Prior	3	Prior	3	Prior	3	3 role	2	M	2	1+5

1. Rename title to align with HANSA ATM CCM ??- adding CCM roles in HANSA TOR; Revise CCM committee in the organogram and coordinating mechanism
2. Upgrade HANSA STC and being the same as Executive and CCM members mainly from health sector (none from line ministries, DPs, Donor)
3. CCM chair – same as Leader of HANSA STC (no election and nor rotation)
4. Oversight committee, RMC – merging with HANSA operational committee – by adding CEMPE in the committee
5. CCM Secretariat – merging in NPCO lead and co-lead by Cabinet and DoI

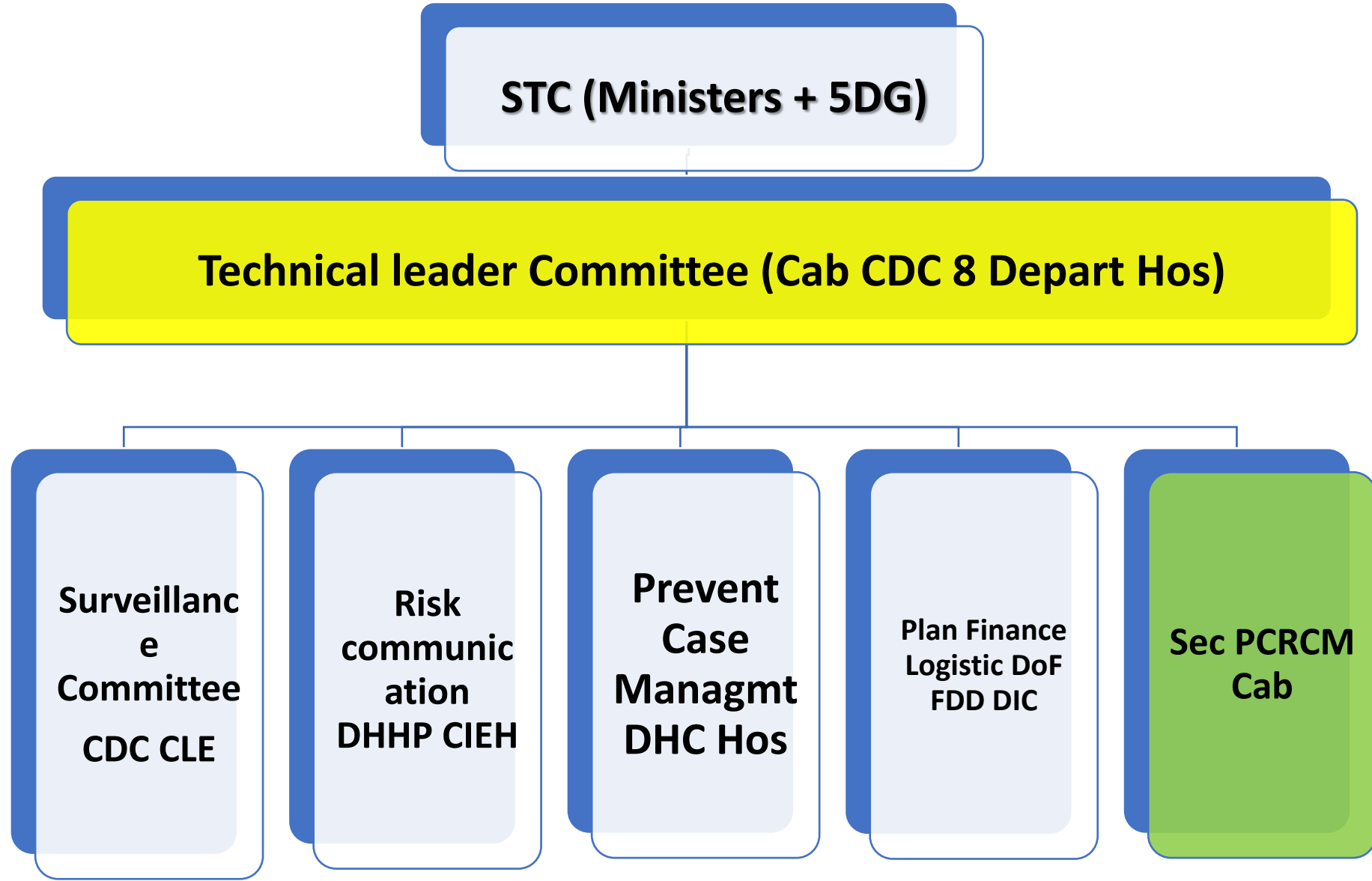
Organogram 2: Positioning CCM in HANSA committee



Discussion: propose 4 options of CCM positioning integrated in the existing structures

1. Option 1: Positioning CCM in Health SWC, Sector Reform Samsang Com
2. Option 2: Positioning CCM in HANSA Committee
- 3. Option 3: Positioning CCM in Technical Com for PCRCM Covid-19**
4. Option 4: Positioning CCM in Disaster Prevent & Control Com

Technical Com for PCRCM Covid-19



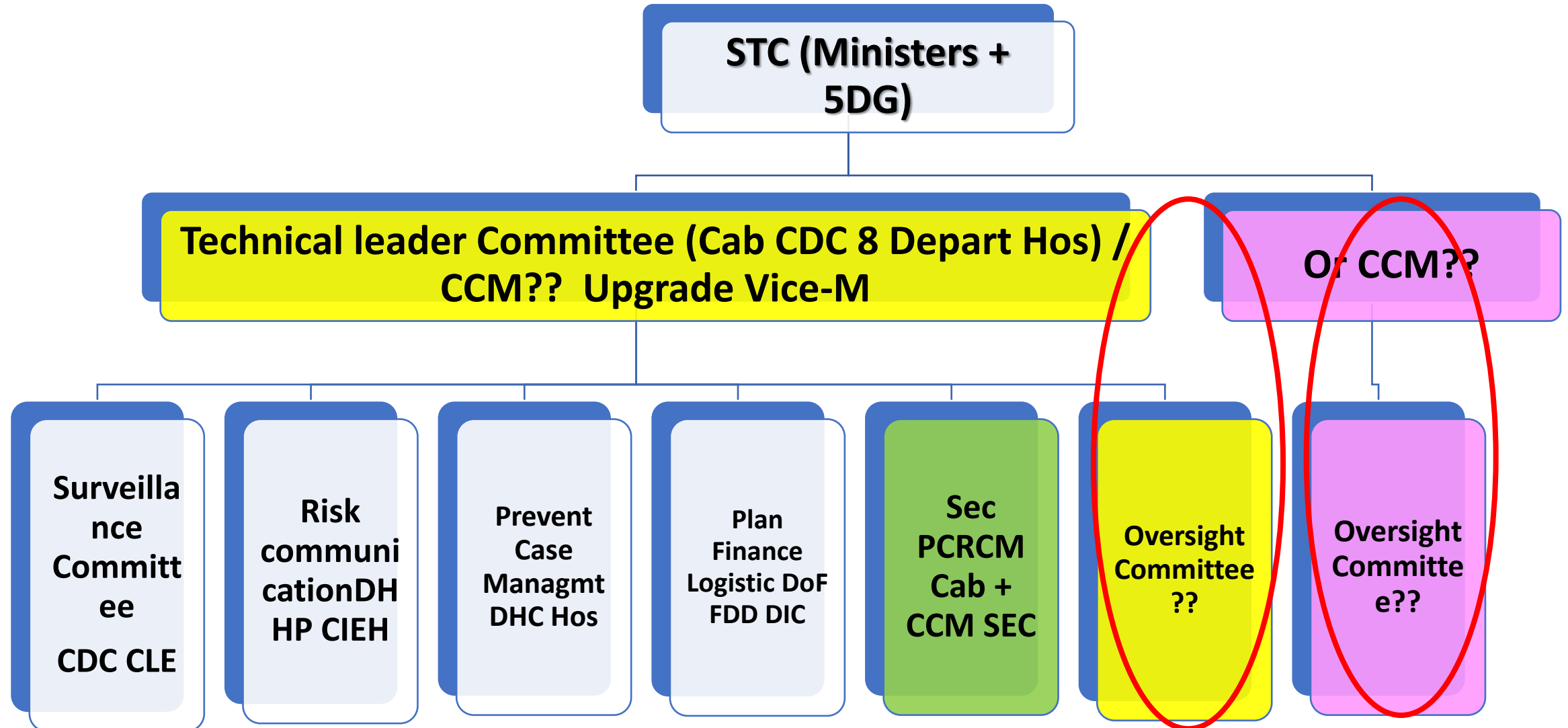
Option 3: Positioning CCM in Technical Com for PCRCM Covid-19

No	Name of committees	S Positioning	S Align	S Harm oni	S inclusion CDCATM	S chair	S Sec	S Com funct	S Sec Funct	S Coord CCM	S TOR CCM relate	S Integ rat CCM	S Evolu tion	
3	Technical com for PCRCM Covid-19	1	C health structure +	3 +Hospitals+ MOD+MPS	3 Full	3 No ATM	1 minist ers+	3 Cab +++	3 Prior	3 Prior	3 less	1 1 role	1 M	2 3+1

1. Rename title to align with infectious and emerging diseases: Covid-19 ATM ?? - adding CCM roles in **PCRCM Covid-19** TOR; develop CCM committee in the organogram and coordinating mechanism
2. Revise and add executive and CCM and ATM in **PCRCM Covid-19 committee** mainly committee from health sector (none from line ministries, DPs, Donor)
3. CCM chair – same as Leader of **PCRCM Covid-19 technical committee** (no election and nor rotation) upgrade from DG cab to Vice Minister
4. Reserve Oversight committee by adding CDC ATM leader
5. RMC – merging with logistic procurement planning financial committee
6. CCM Secretariat – merging in SEC PCRCM lead by Cabinet +

Organogram 3:

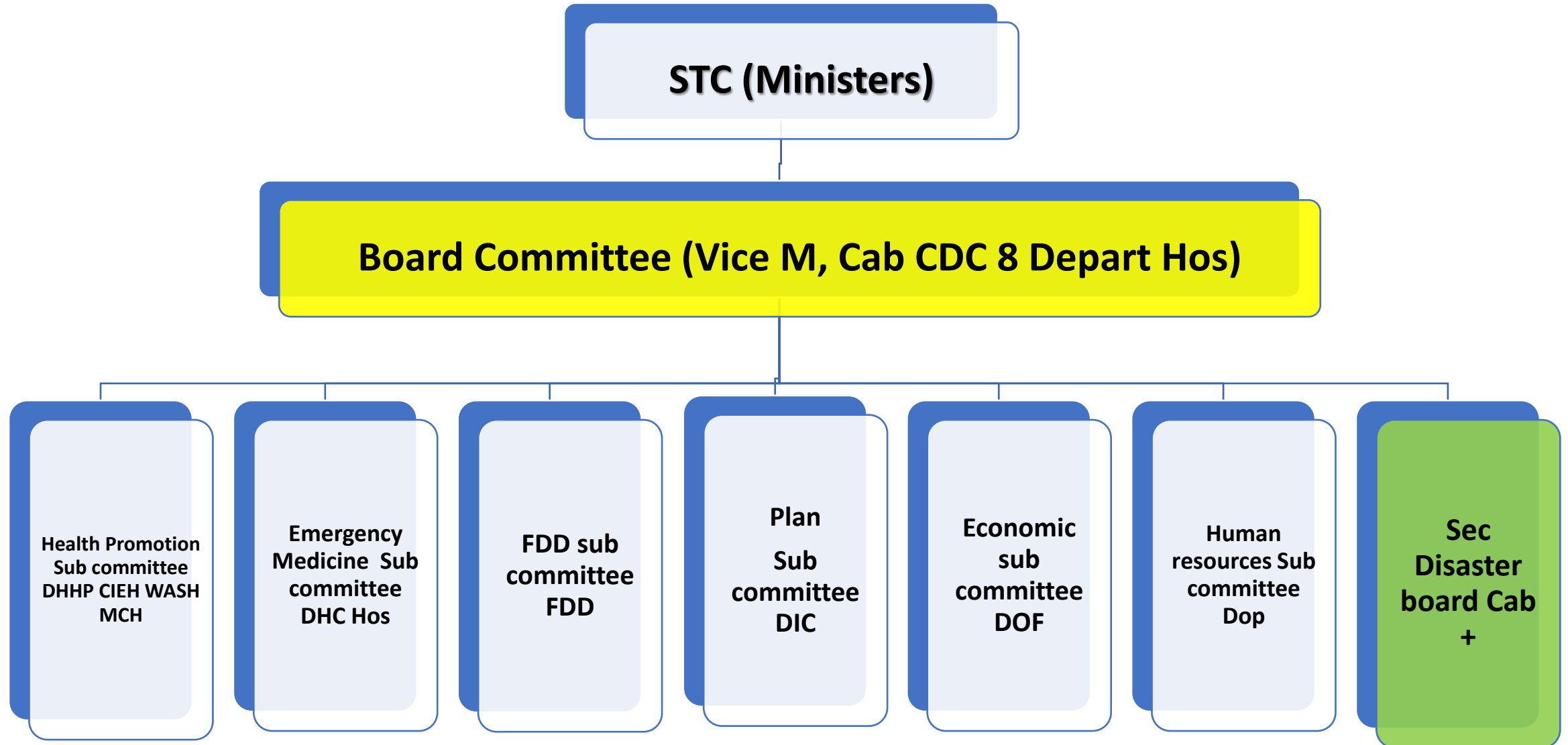
Positioning CCM in Technical Com for PCRCM Covid-19



Discussion: propose 4 options of CCM positioning integrated in the existing structures

1. Option 1: Positioning CCM in Health SWC, Sector Reform Samsang
2. Option 2: Positioning CCM in HANSA Committee
3. Option 3: Positioning CCM in Technical Com for PCRCM Covid-19
- 4. Option 4: Positioning CCM in Disaster Prevent & Control Com**

Disaster Prevention & control committee

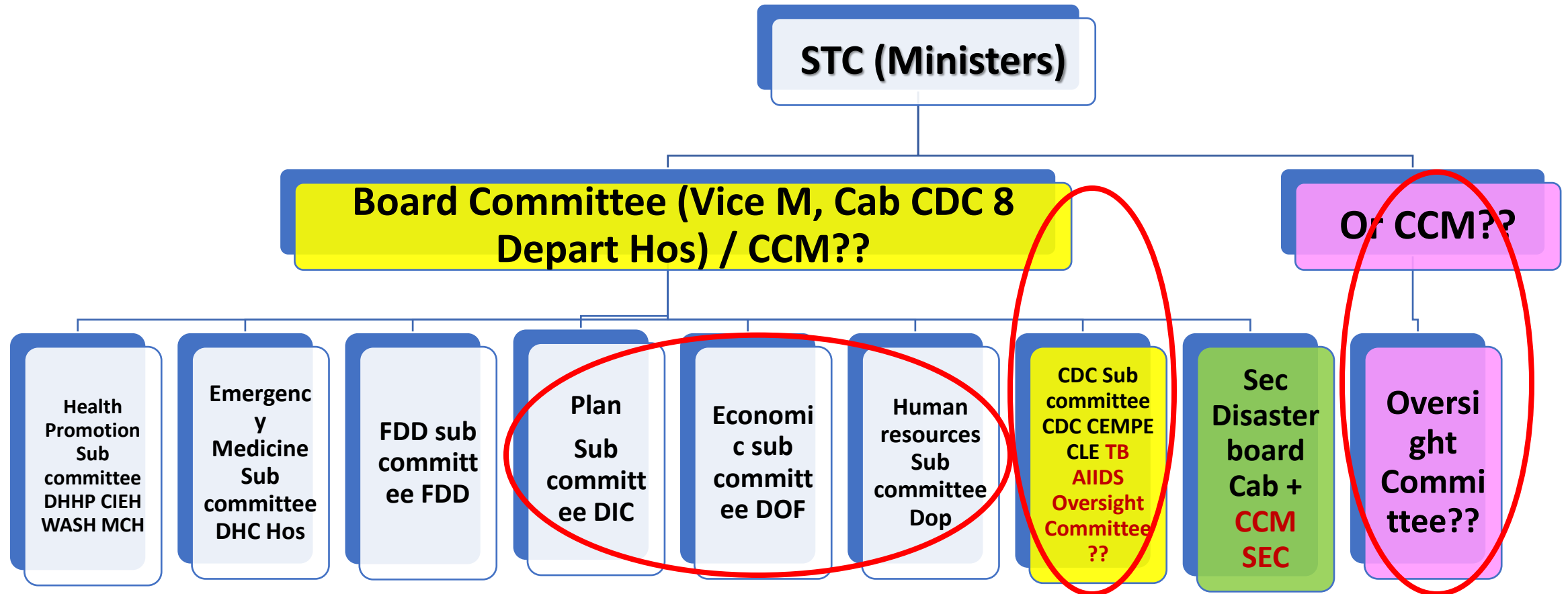


Option 4: Positioning CCM in Disaster Prevention & Control Com

No	Name of committees	S Positioning	S Align	S Harm oni	S inclusion CDCATM	S chair	S Sec	S Com funct	S Sec Funct	S Coord CCM	S TOR CCM relate	S Integ rat CCM	S Evolu tion						
5	disaster Prevent & control	2	C health structure	3	8 programs + mass organizatio	3 full	3 No AT	2	minist ers+	3 Cab	3 Funct	2 Funct	2 less	1	none	0	M	2	2+4

1. Rename title to align with broaden health and ATM ?? - adding CCM roles in **disaster prevent & control Committee** TOR; develop CCM committee in the organogram and coordinating mechanism
2. Revise and add executive and CCM and ATM in **disaster prevent & control Committee** mainly committee from health sector (none from line ministries, DPs, Donor)
3. CCM chair – Vice Minister same as Leader of board of **disaster prevent & control Committee** (no election and nor rotation)
4. Reserve Oversight committee by adding CDC ATM leader
5. RMC – merging FDD logistic procurement planning financial in one committee
6. CCM Secretariat – merging in SEC PCRCM lead by Cabinet +

Organogram 4: Positioning CCM in Disaster Prevention & Control Committee



VI. Conclusion

Conclusion

- Majority out of 27 participants who are representative from CCM, ExCom, OC and RMC and ATM national program who attended in the consultative joint meeting on 6th August chaired by CCM Chair conducted by CCM Sec have agreed on the option 1 for positioning CCM in the Health SWC-Sector Reform-Samsang Committee
- The next step is to develop the evolution CCM positioning pathway plan in Health SWC-Sector Reform-Samsang Committee

Thank You Very Much