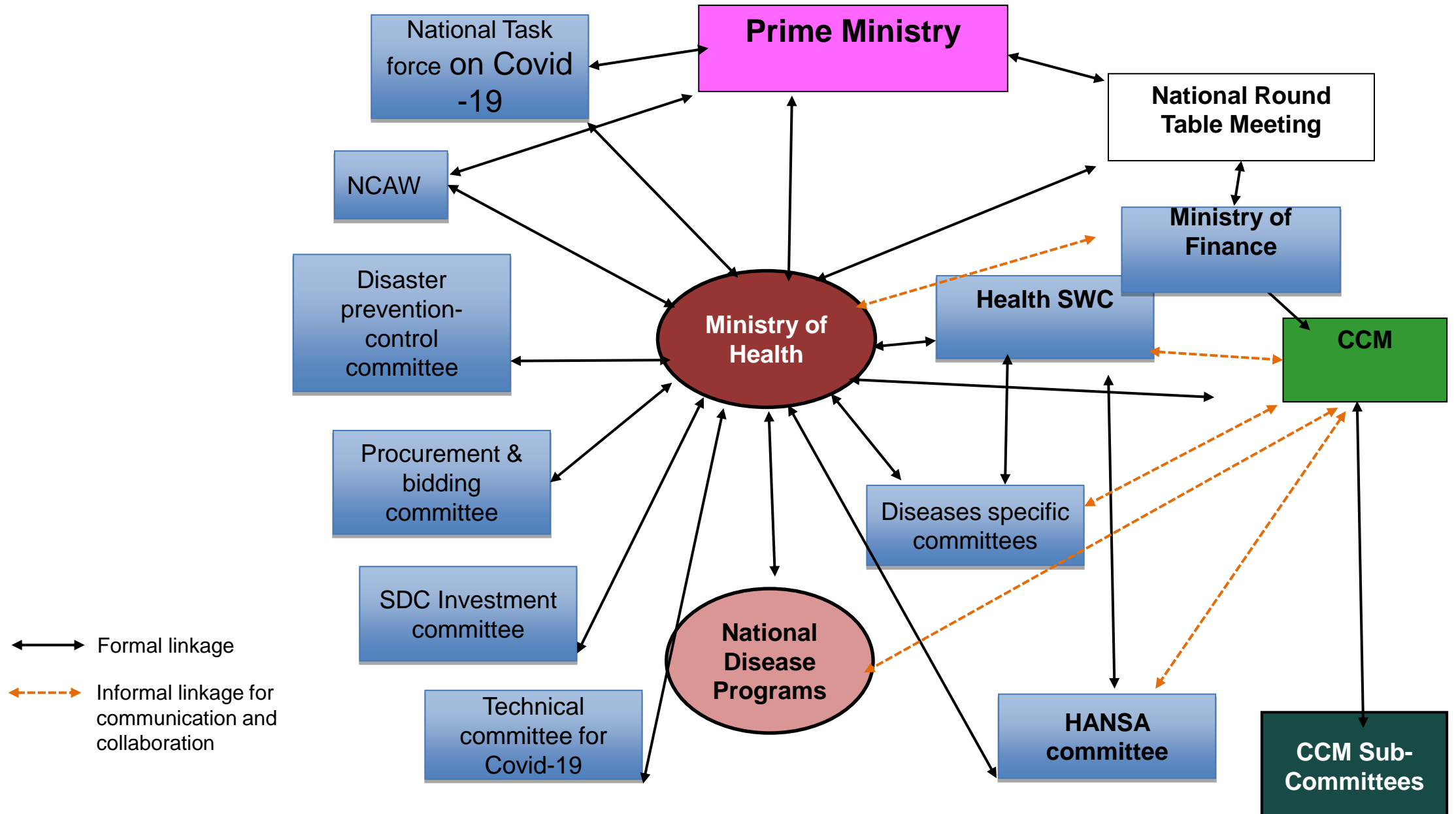


Mapping of CCM Positioning in the existing structures

10th August 2021

Annex 1: Country Coordinating Mechanism Positioning Mapping with national bodies in Lao P.D.R in 2021



Annex 2: Mapping scoring of 17 current existing structures reviewed

No	Name of committees	S	Positioning	S	Align	S	Harm oni	S	Inclusion	S	Chair	S	Sec	S	Com funct	S	Sec Funct	S	Coor CCM	S	TOR CCM relate	S	Integrat CCM	S	Total S	Rate
									CDCATM																	
1	CCM	1	C health structure ++	3	3 programs	1	partly	2	Inclus	3	Vice -M	2	Cab	3	Prior	3	Prior	3	Prior	3	13 roles	3	Prior	3	30	
2	Health SWC health reform Samsang Com	3	C health structure	3	8 programs +UHS+NHIB	3	Full	3	Inclus	3	Ministers	3	Cab	3	Prior	3	Prior	3	Prior	3	4 role	2	Prior	3	35	1st
3	HANSA committee	2	C health structure	3	8 programs	3	partly	2	No M	3	DOIC	2	NPCO	1	Prior	3	Prior	3	Prior	3	3 role	2	M	2	29	2nd
4	Technical Com for PCRCM Covid-19	1	C health structure +	3	8 programs +Hospitals+MOD+MPS	3	Full	3	No ATM	1	ministers +	3	Cab +++	3	Prior	3	Prior	3	less	1	1 role	1	M	2	27	3rd
5	Disaster Prevent & Control Com	2	C health structure	3	8 programs + mass organizatio	3	full	3	No AT	2	ministers +	3	Cab	3	Funct	2	Funct	2	less	1	none	0	M	2	26	4nd
6	Covid-19 Vaccine Committee	1	C health structure	3	5 programs	2	partly	2	No ATM	1	Vice M	2	Cab	3	less	1	less	1	less	1	none	0	less	1	18	12th
7	SDC investment Com	1	health structure	3	5 programs	2	partly	2	None	0	ministers +	3	cab	3	Funct	2	Funct	2	less	1	none	0	less	1	20	7th
8	Prpocurement & bidding committee	1	C health structure ++	3	4 programs	2	partly	2	None	0	ministers +	3	DoF	2	Funct	2	Funct	2	less	1	none	0	less	1	18	12th
9	Advancement Women Com	1	C health structure ++	3	1 programs	1	partly	2	none	0	Vice M	2	cab	3	Funct	2	Funct	2	less	1	none	0	less	1	18	12th
10	NCD com	1	C h structure	3	2 HCD+hospital	1	partly	2	none	0	Minister	3	DHC	2	less	1	less	1	less	1	none	0	less	1	16	16th
11	Human Trafficking Com Sec	1	C health structure	3	3 programs	1	partly	2	no CDCTM	1	Vice M	2	DHC	2	Funct	2	less	1	less	1	none	0	less	1	17	15th
12	HIV/AIDS Com	1	C h structure++	3	1 program	1	partly	2	NoTM	2	Ministers	3	AC	1	less	1	less	1	Prior	3	Prior	3	Prior	3	24	5th
13	National Task force Covid-19	1	C health structure++	3	6 programs	3	partly	2	NoATM	1	PM	3	Vice M	3	Funct	2	Funct	2	less	1	none	0	less	1	22	6th
14	Sec National Task force Covid-19	1	C health structure++	3	6 programs	3	partly	2	No ATM	1	Vice M	2	CDC	2	Funct	2	Funct	2	less	1	none	0	less	1	20	7th
15	NCAW	1	C health structure++	3	1 program	1	partly	2	none	0	PM	3	LWU	3	Funct	2	Funct	2	less	1	none	0	less	1	19	11th
16	NCN	1	C h structure++	3	1 program	1	partly	2	none ATM	1	PM	3	Vice M	3	Funct	2	Funct	2	less	1	none	0	less	1	20	7th
17	STC EU BS Nutrition	1	c hstructure++	3	6 programs	3	partly	2	None	0	PM	3	DHHP	2	Funct	2	Funct	2	less	1	none	0	less	1	20	7th

Mapping analysis of existing structure with top 4 high score

No	Name of committees	S	Positioning	S	Align	S	Harm oni	Sinclusion		S	chair	S	Sec	S	Com funct	S	Sec Funct	S	Coor CCM	S	TOR CCM relate	S	Inte grat CCM	S	Evol utio n
									CDCATM																
1	CCM	1	C health structure +	3	3 programs	1	part	2	Inclusion	3	Vice - M	2	Cab	3	Prior	3	Prior	3	Prior	3	13 roles	3	Prior	3	
2	Health SWC Reform Samsang Com	3	C health structure	3	8 programs +UHS+NHIB	3	Full	3	Inclusion	3	Minist ers	3	Cab	3	Prior	3	Prior	3	Prior	3	4 role	2	Prior	3	0+1
4	HANSA Committee	2	C health structure	3	8 programs	3	part	2	No M	3	DOIC	2	NPCO	1	Prior	3	Prior	3	Prior	3	3 role	2	M	2	2+5
3	Technical Com for PCRCM Covid-19	1	C health structure +	3	8 programs +Hospitals+ MOD+MPS	3	Full	3	No ATM	1	minist ers+	3	Cab +++	3	Prior	3	Prior	3	less	1	1 role	1	M	2	4+1
5	Disaster Prevent & Control Com	2	C health structure	3	8 programs + mass organizatio	3	full	3	No AT	2	minist ers+	3	Cab	3	Funct	2	Funct	2	less	1	none	0	M	2	2 +4