

Fighting Pandemics and Building a Healthier, More Equitable World

Overview of the New Global Fund Strategy

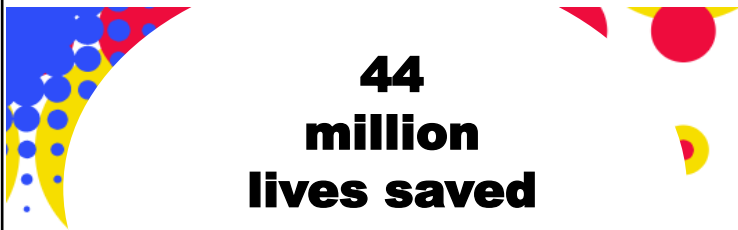
CCM Plenary Meeting

30 September 2022

Background

Our Progress

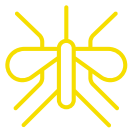
As of end 2020:



21.9 million people on antiretroviral therapy for HIV in 2020



4.7 million people with TB treated in 2020



188 million mosquito nets distributed in 2020

Where we are now

We are off track to meet the **Sustainable Development Goal (SDG) 3 targets.**

3 GOOD HEALTH AND WELL-BEING



Our Future

New Global Fund Strategy to accelerate impact toward the 2030 horizon.



Fighting Pandemics and Building a Healthier and More Equitable World

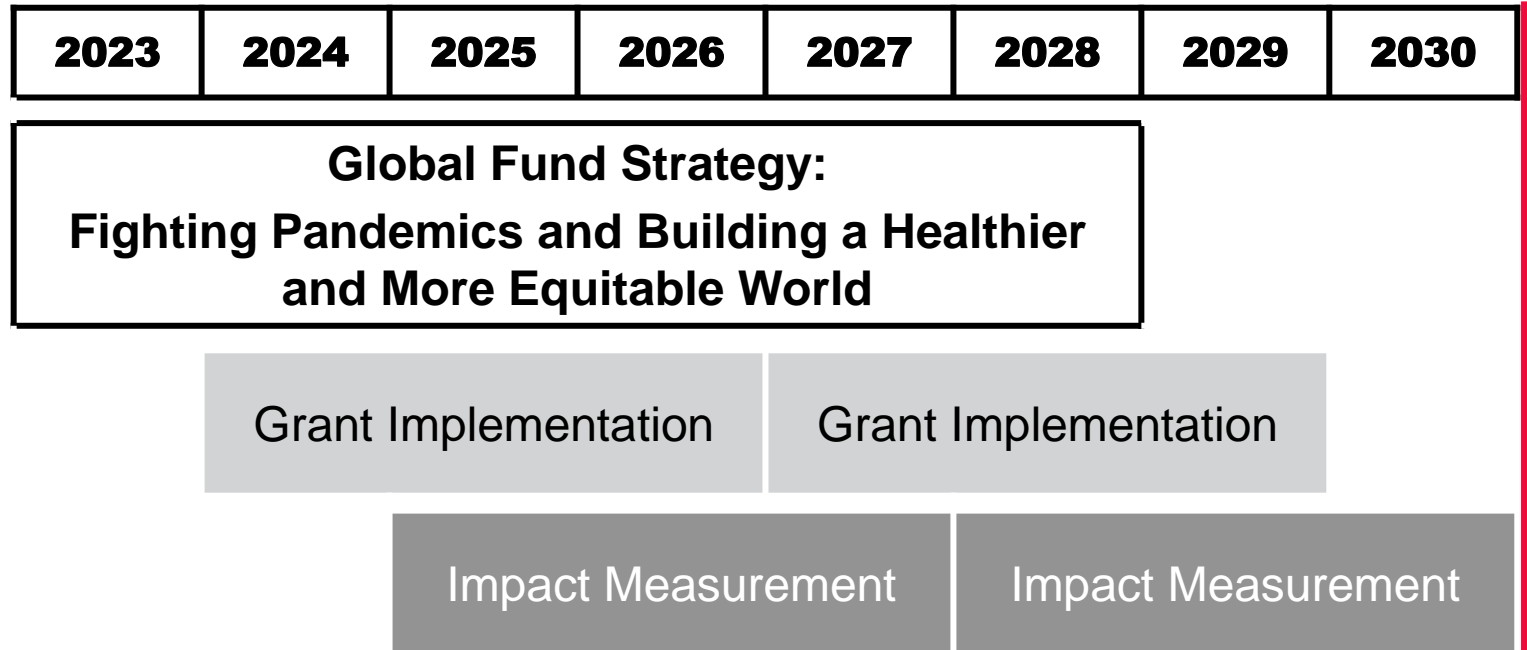
Global Fund Strategy
(2023-2028)

High-level Features of the New Strategy

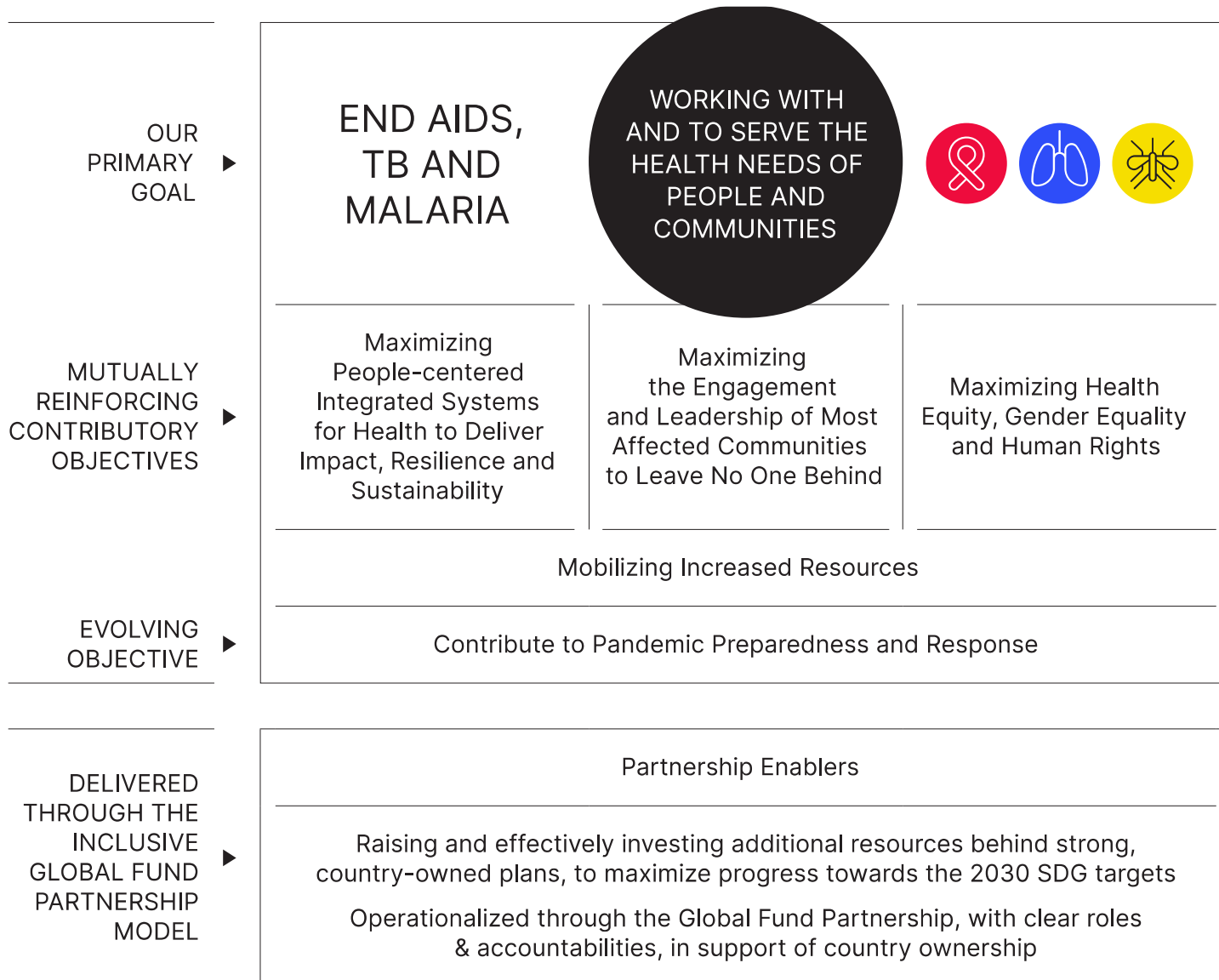
Strategy Vision

“A world free of the burden of AIDS, tuberculosis and malaria with better, equitable health for all.”

The Strategy’s impact will be measured in 2030 alongside the SDGs.



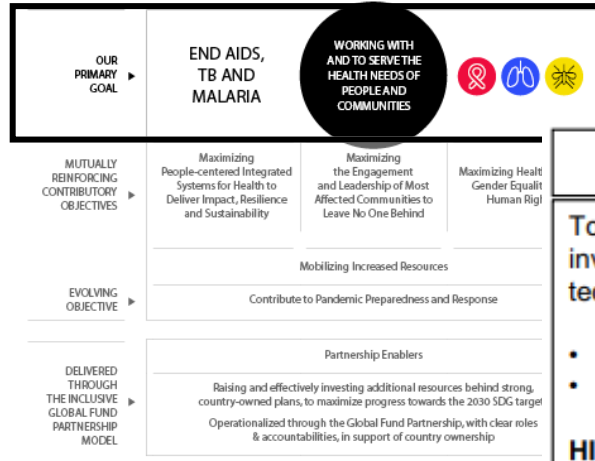
The Global Fund Strategy Framework



- **Strategy's primary goal** is to end AIDS, TB, and Malaria.
- **People and communities are at the heart** of our Strategy.
- Achievement of the primary goal is **supported by 4 mutually reinforcing contributory objectives** and an **evolving objective**.
- Partnership Enablers outline **roles and accountabilities** of all stakeholders.

The Global Fund Strategy Framework

Primary Goal



Under the primary goal, there are sub-objectives (bullet points) that describe the specific areas focus needed to achieve this goal.

End AIDS, TB and Malaria		
<p>To reach the ambitious SDG targets for HIV, TB and malaria, the Global Fund will support catalytic, people-centered HIV, TB and malaria (HTM) investments tailored to maximize impact, equity, quality and build sustainability according to local context, based on country-owned plans and aligned with technical partner guidance, including through:</p> <ul style="list-style-type: none"> • Redoubled focus on HTM incidence reduction • Addressing structural barriers to HTM outcomes 		
<p>HIV</p> <ul style="list-style-type: none"> • Accelerate access to and effective use of precision combination prevention, with behavioral, biomedical and structural components tailored to the needs of populations at high risk of HIV infection, especially key and vulnerable populations (KVP) • Provide quality, people-centered diagnosis, treatment and care, to improve well-being for people living with HIV (PLHIV), prevent premature mortality and eliminate HIV transmission • Advocate for and promote legislative, practice, program and policy changes to reduce HIV-related stigma, discrimination, criminalization, other barriers and inequities and uphold the rights of PLHIV and KVP 	<p>TB</p> <ul style="list-style-type: none"> • Focus on finding and treating all people with DS-TB and DR-TB through equitable, people-centered approaches • Scale up TB prevention with emphasis on TB preventive treatment and airborne infection prevention and control • Improve the quality of TB services across the TB care cascade including management of comorbidities • Adapt TB programming to respond to the evolving situation, including through rapid deployment of new tools and innovations • Promote enabling environments, in collaboration with partners and affected communities, to reduce TB-related stigma, discrimination, human rights and gender-related barriers to care; and advance approaches to address catastrophic cost due to TB 	<p>Malaria</p> <ul style="list-style-type: none"> • Ensure optimal vector control coverage • Expand equitable access to quality, early diagnosis and treatment of malaria, through health facilities, at community level and in the private sector • Implement malaria interventions, tailored to sub-national level, using granular data and capacitating decision-making and action • Drive toward elimination and facilitate prevention of reestablishment • Accelerate reductions in malaria in high burden areas and achieve sub-regional elimination in select areas of sub-Saharan Africa to demonstrate the path to eradication

What is different about this new Strategy?

1	Across all three diseases, an intensified focus on prevention.
---	---

2	Greater emphasis on integrated, people-centered services.
---	--

3	A more systematic approach to supporting the development and integration of community systems for health.
---	--

4	A stronger role and voice for communities living with and affected by the diseases.
---	--

5	Intensified action to address inequities, human rights and gender-related barriers.
---	--

6	Greater emphasis on programmatic and financial sustainability.
---	---

7	Greater focus on accelerating the equitable deployment of and access to innovations.
---	---

8	Much greater emphasis on data-driven decision-making.
---	--

9	Explicit recognition of the role the Global Fund partnership can and should play in pandemic preparedness and response.
---	---

10	Clarity on the roles and accountabilities of Global Fund partners across every aspect of the Strategy.
----	---

Next Steps



- It is important for **all stakeholders** in the Global Fund partnership **to consider which changes they can make** to deliver our Strategy's goals and objectives – as guided by the roles and accountabilities in the Partnership Enablers section.
- The **Secretariat is also working to update relevant policies, guidelines, materials and tools** for the next cycle of grants.
- We look forward to **working together to achieve our vision** of a world free of the burden of AIDS, TB and malaria with better, equitable health for all.

Resources

- Global Fund Strategy (2023-2028): [عربي](#) | [English](#) | [Español](#) | [Français](#) | [Português](#) | [Русский](#)
- Executive Summary: [English](#) | [Español](#) | [Français](#) | [Italiano](#) | [日本語](#) | [Português](#) | [Русский](#) | [Deutsch](#) | [عربي](#) | [中文](#)
- Strategy Framework: [عربي](#) | [English](#) | [Español](#) | [Français](#) | [Português](#) | [Русский](#)
- For more information please see: <https://www.theglobalfund.org/en/strategy/>

Next Steps: What does the new Strategy mean for CCMs?

CCMs play an important role in delivering the priorities of the Global Fund partnership's new Strategy



Stronger CCM Governance

- Ensuring balanced and inclusive decision making around use of Global Fund resources, especially the meaningful involvement of communities, including KPs.
- Strengthening CCM positioning and alignment with national structures to strengthen effective implementation of the Strategy's priorities (e.g., RSSH, PPR) and build sustainability.

Supporting decision-making around the Strategy's new priorities

- Communicating the Strategy's priorities to stakeholders and ensuring they are embedded in grants and Global Fund lifecycle processes.
- Promoting new partnerships (e.g., multi-sector to address structural barriers to HTM outcomes, with PPR or private sector stakeholders) and new linkages (e.g., to build integrated, people-centered, quality services) to deliver the Strategy's aims.
- Considering CCM membership adjustments to bring in relevant new expertise.

Resources

- Global Fund Strategy (2023-2028): [عربي](#) | [English](#) | [Español](#) | [Français](#) | [Português](#) | [Русский](#)
- Executive Summary: [English](#) | [Español](#) | [Français](#) | [Italiano](#) | [日本語](#) | [Português](#) | [Русский](#) | [Deutsch](#) | [عربي](#) | [中文](#)
- Strategy Framework: [عربي](#) | [English](#) | [Español](#) | [Français](#) | [Português](#) | [Русский](#)
- Contact: ccm@theglobalfund.org or for more information please see: <https://www.theglobalfund.org/en/strategy/>